



# 1000 Pip Climber System Expert Advisor Instruction

## Installing the 1000 Pip Climber System Expert Advisor

1. Download the Expert Advisor from this page:

**DAX Trading EA**   **Forex Trading EA**   **Scalping Trading EA**   **1000 Pip Climber System EA**

**Please use our "1000 Pip Climber System EA" only once per MetaTrader4!**

Our EA scans all 18 signal charts for new signals. The EA "1000PCS\_EA" is already running in each signal chart. This is important for finding signals.

[Download](#)   [Update History](#)   [Instruction](#)   [FAQ - 1000 Pip Climber](#)

**Download**

Please download the EA here and copy it into the broker(s).

[We show you how to do this in the FAQ - "How to install and start an Expert Advisor \(EA\) in MetaTrader4".](#)

[1000 Pip Climber System EA \(ex4 file for MT4\)](#)

[To top](#)

2. After downloading the Expert Advisor you will find it in the Windows "Download" folder. Otherwise browse for the file "1000Pip Climber System EA.ex4" or download the EA again and select the storage location "Desktop".
3. Open the MT4
4. Click on File > Open data folder
5. Click on MQL4 > Experts
6. Copy the file 1000Pip Climber System EA.ex4 to the Experts folder
7. Close and reopen the MT4



# 1000 Pip Climber System Expert Advisor Instruction

V1.75

## Setting up the Expert Advisor / First Start

1. Open a new chart in your MT4
2. Drag the EA "1000 Pip Climber System EA" into this new chart

**Please use only one chart with our EA - not for every asset / timeframe!**

Our Expert Advisor scans all other signal charts and opens a PendingOrder or a MarketOrder as soon as a signal appears.

Please press "F7" to enter the Expert Advisor settings.

In the first line of the EA settings under **username or e-Mail address** please enter your login name from our website <https://www.forexdax.de/en/login>.

Expert - 1000Pip Climber System EA

Variable	Value
your username or e-mail address at "1000pipclimberea.com"	--> your username or e-mail <--
Settings Lots, Trading Mode, TakeProfit, StopLoss	-----

Here you can read about the first steps of the installation:

<https://www.forexdax.de/en/docs/first-steps>

<https://www.forexdax.de/en/docs/install-and-start-expert-advisor/>

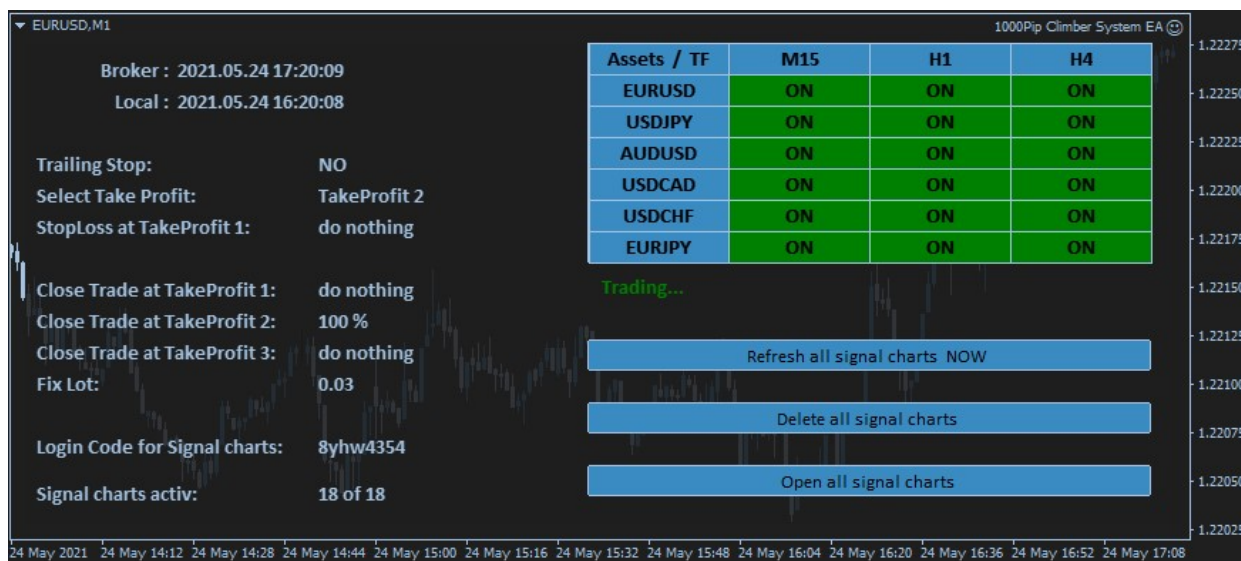


# 1000 Pip Climber System Expert Advisor Instruction

V1.75

This is the only way the EA can connect to your personal account and work properly.

The EA should look like this:





# 1000 Pip Climber System Expert Advisor Instruction

V1.75

## Buttons on the Dashboard

**Login Code:** The monthly login code of the signal provider [www.1000pipclimbersystem.com](http://www.1000pipclimbersystem.com) can be enter here.

**Refresh Charts at new month:** With YES, the login code is automatically renewed in all 18 signal charts when the month changes. No manual renewal of the individual charts is necessary. The condition for this is:

- You have entered the new code in the "Login Code" field or
- in your account on our website [www.forexdax.de/en/login](http://www.forexdax.de/en/login) you have entered the new code for the corresponding month.

**Refresh Charts NOW:** If the automatic refresh did not work, or you just want to refresh your charts, you can manually refresh all charts here. The login code from your account or from the field "Login Code" will be used.

Assets	M15	H1	H4
EURUSD	not active!	not active!	not active!
USDJPY	not active!	not active!	not active!
AUDUSD	not active!	not active!	not active!
USDCAD	not active!	not active!	not active!
USDCHF	not active!	not active!	not active!
EURJPY	not active!	not active!	not active!

**Open all charts:** Especially during the first installation (if no signal chart is open yet) you can automatically open all 18 signal charts here - with the current settings.

**Delete all charts:** Here you can close all 18 signal charts immediately. This is interesting if some charts have wrong settings, do not work properly, are partially not opened etc. Afterwards you can open them again with "Open all charts".

**The individual assets with timeframes have a switch. This can contain the following:**

- **not active:** The EA could not find a signal chart with this asset and timeframe. Click on "Open Chart" to open a new signal chart with the current settings.
- **green ON:** The signal chart is open and is monitored by the EA. If a signal appears, the EA will open this trade according to the settings.
- **orange OFF:** The signal chart is open, but the trades are not set by the EA. Interesting to not follow some assets or timeframes.

**For updates about the Expert Advisor, manuals or other information, please visit:**

<https://www.forexdax.de/en/system/>



# 1000 Pip Climber System Expert Advisor Instruction

V1.75

## Settings for „1000 Pip Climber System EA“

ab	your username or e-mail address at "1000pipclimberea.com"	--> your username or e-mail <--
ab	Settings Lots, Trading Mode, TakeProfit, StopLoss	.....
123	EA Magicnumber	4124
123	Lots Mode	Fix Lots
1/2	Mode Fix: Lots	0.03
123	Mode Percent: Percent of Balance (1-10)	1
123	Max Slippage	90
ab	Text OrderComment	1000Pip Climber EA
123	Trading Mode	PendingOrder
ab	Only for "Market Orders"	PendingOrder MarketOrder
123	TakeProfit Mode	

**your username or e-mail address at "forexdax.de":** Please enter your username or email address of your account on our website [www.forexdax.de](http://www.forexdax.de)

### Settings Lots, TakeProfit, StopLoss

**EA Magicnumber:** free selectable - only important if more than one EA works on one MT4 account

#### Lots Mode:

- **Fix Lots:** each trade starts with the same lot size
- **Percent of Balance:**

**Lots (for "Mode Fix Lots"):** The fixed lot size. **Please note:** If you allow partial closure of trades, the fixed lot size must be 3 times larger than the minimum lot size.

**Mode Percent (1-10):** When set to X percent, the following is determined: If the trade goes into StopLoss, a maximum of X percent of the currently free capital should be risked. From this the EA then calculates the lot size. That the difference between the current price and the StopLoss is always different and the free amount is always changing, the lot is never the same.

**Max Slippage:** max. slippage for open trades

**Text OrderComment:** Text that is added to each trade.

#### Trading Mode:

- **PendingOrder:** default: At every signal a pending order is opened. When the EntryPrice is reached, this trade becomes a MarketOrder.
- **MarketOrder:** A market order is generated immediately for each signal.



# 1000 Pip Climber System Expert Advisor Instruction

V1.75

123 Select Order Types	AutoTrading Buy & Sell (default)
123 Select Order Mode	Set Takeprofit & StopLoss to the trade (default)

## Select Order Types:

- **AutoTrading Buy & Sell:** All trades are allowed. These can be BUY or SELL orders.
- **Set trading direction manually:** AUTO (BUY and SELL are allowed), only BUY, only SELL and OFF (no trading)

## Select Order Mode:

- **Set TakeProfit & StopLoss to the trade:** Take Profit and Stop Loss are noted in the trade. The broker therefore knows your exit options and closes the trade accordingly. In the USA this option is not allowed because of different Stop Loss!
- **Hide TakeProfit & StopLoss:** Take Profit and Stop Loss are hidden from the broker. The EA manages these values in the background. This option must be selected for users and brokers based in the USA! The Expert Advisor closes the trades when the Take Profit or Stop Loss is reached.



# 1000 Pip Climber System Expert Advisor Instruction

V1.75

## Only for Market Orders

ab	Only for "Market Orders"	
123	TakeProfit Mode	Automatic
123	Automatic TakeProfit	Signal Price - Signal Take Profit 1
123	TakeProfit Pips	50
123	StopLoss Mode	Automatic
123	Automatic StopLoss	Signal Price - Signal StopLoss
123	StopLoss Pips	100

**TakeProfit Mode:** Which TakeProfit should be used? The following are possible...

- **Automatic:** Set TakeProfit automatically according to the signal specifications
- **Manuel:** Fixed TakeProfit according to the entries in "TakeProfit Pips".

**Automatic TakeProfit:** only with TakeProfit Mode: **Automatic**

- **Signal Price - StopLoss:** difference between Open Price and Stop Loss
- **Signal Price - Take Profit 1: (default)** difference between Open Price and Take Profit 1
- **Signal Price - Take Profit 2:** difference between Open Price and Take Profit 2
- **Signal Price - Take Profit 3:** difference between Open Price and Take Profit 3

**TakeProfit Pips:** only with TakeProfit Mode: **Manuel** fixed TakeProfit in Pips

**StopLoss Mode:** Which StopLoss should be used? The following are possible...

- **Automatic:** Set StopLoss automatically according to the signal specifications
- **Manuel:** Fixed StopLoss according to the entries in "StopLoss Pips".

**Automatic StopLoss:** only with StopLoss Mode: **Automatic**

- **Signal Price - StopLoss: (default)** difference between Open Price and Stop Loss
- **Signal Price - Take Profit 1:** difference between Open Price and Take Profit 1
- **Signal Price - Take Profit 2:** difference between Open Price and Take Profit 2
- **Signal Price - Take Profit 3:** difference between Open Price and Take Profit 3

**StopLoss Pips:** only with StopLoss Mode: **Manuel** fixed StopLoss in Pips



# 1000 Pip Climber System Expert Advisor Instruction

V1.75

## Only for Pending Orders

ab Only for "Pending Orders": Settings TakeProfit & StopLoss	
123 Select max. TakeProfit	Take Profit 3
123 Close part of trade at TakeProfit 1	close 1/3 trade
123 Close part of trade at TakeProfit 2	close 1/3 trade
123 Close part of trade at TakeProfit 3	close complete trade
123 Set StopLoss at TakeProfit 1	to BreakEven
123 Set StopLoss at TakeProfit 2	to Profit 1

**Select max. TakeProfit:** Which TakeProfit should be used? The following are possible...

- **No Take Profit:** set no TP to the trades
- **Take Profit 1:** set only the first TP from the signal chart
- **Take Profit 2:** set the second TP from the signal chart
- **Take Profit 3:** set the third TP from the signal chart

**Close part of trade at TakeProfit 1-3:** The EA can close parts of the trade when a certain TP is reached. The selection can be:

- **do nothing:** no partial closure
- **close 1/3 trade:** terminate 1/3 of the master trade. 2/3 should continue to run
- **close 1/2 trade:** terminate 1/2 of the master trade. 1/2 should continue to run
- **close complete trade:** close trade completely

**Set StopLoss at TakeProfit 1:** Set StopLoss at the TakeProfit 1

- **do nothing:** Stop Loss do not move
- **to BreakEven:** Set Stop Loss to BreakEven (profit protection – max. loss = 0)

**Set StopLoss at TakeProfit 2:** Set StopLoss at the TakeProfit 2

- **do nothing:** Stop Loss do not move
- **to BreakEven:** Set Stop Loss to BreakEven (profit protection – max. loss = 0)
- **to Profit 1:** Set Stop Loss to BreakEven (securing the profit at Take Profit 1)

## Trailing Stop

ab Settings TrailingStop	
123 Trailing Stop	NO
123 Trailing Step (Pips)	30

**Trailing Stop:** YES (allow Trailing Stops) / NO (disallow Trailing Stops)

**Trailing Step (Pips):** Step in Pips for Trailing Stop





# 1000 Pip Climber System Expert Advisor Instruction

V1.75

## Settings Assets and Timeframes

ab	Settings Assets & Timeframes	
ab	Assets	EURUSD, USDJPY, AUDUSD, USDCAD, USDCHF, EURJPY
123	TimeFrame M15	YES
123	TimeFrame H1	YES
123	TimeFrame H4	YES

**Assets:** EURUSD, USDJPY, AUDUSD, USDCAD, USDCHF, EURJPY

**Please change here if the assets have a suffix. This could be EURUSD**ecn**, EURUSD**f**, EURUSD\_**NP** or similar. Then please change all entries, so that the EA can open the right trades.**

**TimeFrame M15:** allow this timeframe

**TimeFrame H1:** allow this timeframe

**TimeFrame H4:** allow this timeframe

## Settings for the signal charts (1000PCS\_EA)

ab	Settings for 1000 Pip Climber System	
123	Refresh charts at new month automatically	YES
123	TextSize	10
ab	LoginCode	
123	eMail	0
123	MT4PushNotification	0
123	SignalPopUpBox	0
123	OneSignalAtATime	1

**Refresh charts at new month automatically:** with YES, all signal charts are automatically updated with the new monthly code when the month changes. You no longer need to change each chart individually. Either you have entered the code in your account on our website or in the dashboard under "Login Code".

**TextSize:** 10 (default)

**LoginCode:** login code for signal system

**eMail:** 0 = do not send e-mail (default) 1= send e-mail

**MT4PushNotification:** 0 = do not send push notification (default) 1= send push notification

**SignalPopUpBox:** 0 = show no signal alerts (default) 1= show signal alerts

**OneSignalAtATime:** 0 = more than one signal per chart possible 1= only one signal per chart possible (default)



# 1000 Pip Climber System Expert Advisor Instruction

V1.75

## Trading Days and Hours

On what days and at what hours can trades be executed?

ab	Info Trading days	-> TradingDay: 1 = Monday, 2 = Tuesday ... 5 = Friday
ab	Info Trading time	-> Trading START and STOP hour
ab	1. Tradingdays Setting	-----
ab	1. Setting Days	234
ab	1. Start Trading	00:00
ab	1. Stop Trading	24:00
ab	2. Tradingdays Setting	-----
ab	2. Setting Days	1
ab	2. Start Trading	00:00
ab	2. Stop Trading	24:00
ab	3. Tradingdays Setting	-----
ab	3. Setting Days	5
ab	3. Start Trading	00:00
ab	3. Stop Trading	24:00

**TradingDays X:** Trading days (ex. "12345") 1 = Monday, 2 = Tuesday ... 5 = Friday

**TradingStart X:** start trading at broker hour : minute

**TradingStop X:** Stop trading at broker hour : minute



# 1000 Pip Climber System Expert Advisor Instruction

V1.75

## **GENERAL RISK WARNING - LEGAL NOTICE:**

**Risk Warning:** CFDs are complex instruments and come with a high risk of losing money rapidly due to leverage. 2/3 of retail investor accounts lose money when trading CFDs. You should consider whether you understand how CFDs work and whether you can afford to take the high risk of losing your money. Past performance does not constitute a reliable indicator of future results. Future forecasts do not constitute a reliable indicator of future performance. Before deciding to trade, you should carefully consider your investment objectives, level of experience and risk tolerance. You should not deposit more than you are prepared to lose. Please ensure you fully understand the risk associated with the product envisaged and seek independent advice, if necessary. We are not issue advice, recommendations or opinions in relation to acquiring, holding or disposing of any financial product. We are not a financial adviser and all services are provided on an execution only basis.

**The content of this website must not be construed as personal advice. We recommend that you seek advice from an independent financial advisor.**